



PGBC: The ‘Never Decrypt’ Data Platform

Exploring how OmniIndex PGBC enables users to turn their most vulnerable data into a valuable asset.

OmniIndex

Data is your most valuable asset. It holds the key to groundbreaking innovations, unparalleled customer insights, and game-changing efficiencies.

Yet, it is also your greatest liability.

The very moment you need to use your data (to run an analysis, query a database, or apply an AI model), is the moment it is most vulnerable. **This is because to make data useful, you have to decrypt it, exposing your crown jewels to a world of escalating threats.**

For too long, we have accepted this trade-off between innovation and security. We've been forced to lock away our most sensitive and valuable data, fearing the consequences of exposure. This data sits in digital vaults, dormant and unused, while the critical intelligence it contains remains untapped and its potential value lost.

What if you could eliminate that trade-off entirely? What if you could turn your greatest vulnerability into your most unassailable competitive advantage?

That's what OmniIndex offers.

never decrypt

OmniIndex

Introducing OmniIndex PGBC: The inoculated data platform.

- **Your Data Stays Encrypted. Always.** From the moment it's created to the moment you gain insight from it, your data remains locked down with AES-256 encryption. It is never exposed, not even for a millisecond. This is due to OmniIndex's patented real-time homomorphic encryption.
- **It's Inoculated from Ransomware.** The blockchain storage makes your data immutable and decentralized. It cannot be overwritten or encrypted by attackers, rendering ransomware attacks ineffective by design. Your data is not just protected; it's inoculated. There is also instant data recovery in the event of a technical failure or attack on one of your storage nodes.
- **AI Works in Total Privacy.** With our award-winning SLM Boudica AI engine, you can ask natural language questions of your most sensitive encrypted datasets and get answers, all without the data or your queries ever leaving your data store.



**Zero-Trust
Access**



**Homomorphic
Encryption**



**Blockchain
Storage**

OmniIndex

www.omniindex.io +1 (650) 297-4682

Your Competitive Edge: Three Business Case Studies

When you can use data that was previously off-limits, you don't just improve; you leapfrog the competition. Here's how it works in practice, looking at three ways every company can gain this edge: security, analytics, collaboration.



Security: From Reactive Defense to Predictive Intelligence

The Problem: Security log files are a goldmine of threat intelligence, containing the digital fingerprints of every action on your network. However, they are also filled with sensitive PII and confidential data, making them a prime target. Encrypting them for protection renders them useless for the real-time analysis needed to spot an active threat. However leaving them decrypted turns them into a huge vulnerability; often proving to be an attacker's entrypoint.

The "Never Decrypt" Advantage: With OmniIndex, you can continuously feed your encrypted log files into the platform and run real-time analytics. Enabling your security team to:

- **Hunt for Threats Proactively:** Search for indicators of compromise across terabytes of fully encrypted logs to find the needle in the haystack before it becomes a crisis.
- **Gain Instant Insight:** Correlate events from different systems to see the full picture of an attack as it unfolds, drastically reducing mean time to detection (MTTD).
- **Eliminate the Blind Spot:** Centralize all log data into a secure, searchable, and ransomware inoculated repository, turning your biggest security risk into your sharpest intelligence tool.

The Edge: While your competitors react to breach alarms, you are proactively identifying and neutralizing threats before they can execute.



Analytics: Insights from Your Most Regulated Data

The Problem: Every business has "digital dark matter". Highly valuable data that is locked away due to strict regulations.

This could be customer PII governed by GDPR, patient information under HIPAA, or student data protected by education privacy laws. As well as standard PII.

This data is excluded from analytics, leaving a massive gap in your business intelligence and preventing a true 360-degree view of company operations and aggregate analytics.

The "Never Decrypt" Advantage:

OmniIndex provides a secure and compliant way to safely include this data in your analytics. Without ever decrypting the raw data, you can:

- **Enrich Customer Profiles:** Blend anonymized transactional data with regulated customer information to uncover deeper purchasing patterns and create more effective marketing campaigns.
- **Optimize Business Processes:** Analyze operational metrics alongside sensitive employee or client data to identify bottlenecks and improve efficiency while maintaining full privacy.
- **Develop Better Products:** Incorporate valuable but sensitive user feedback and data into your R&D process to build what your customers truly want.

The Edge: While your competitors make decisions based on incomplete data, you are powered by AI insights drawn from your most valuable asset.



Collaboration: Control over Cloud Data

The Problem: Cloud platforms like Google Workspace and Office 365 are essential for productivity, but they can create security & compliance risks.

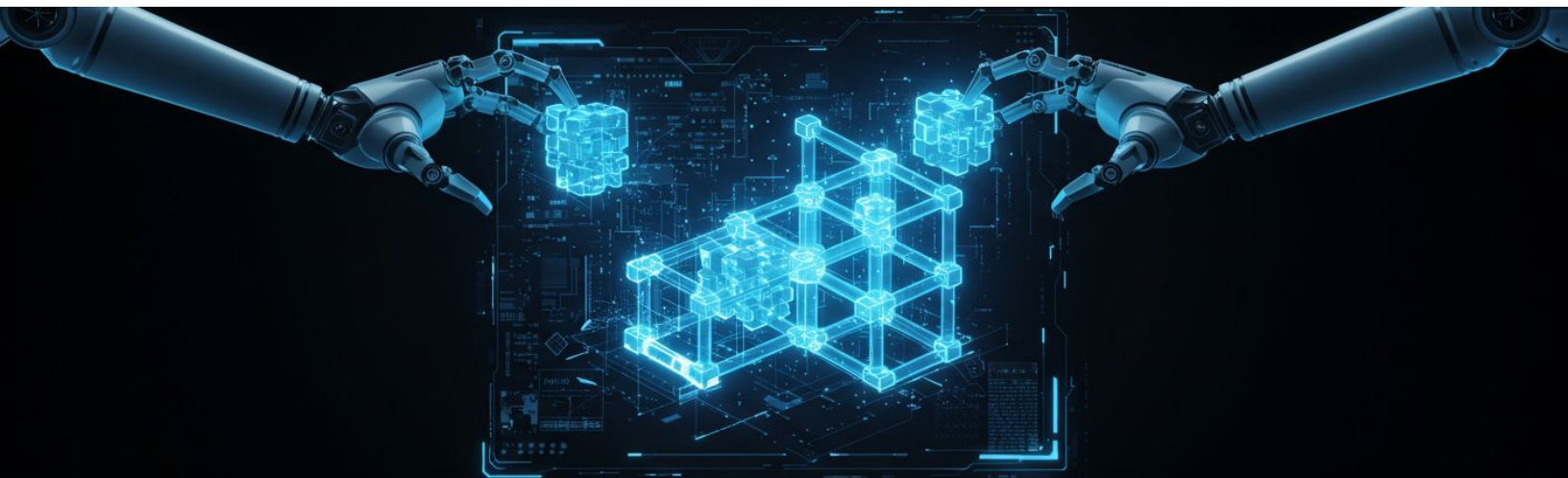
This is because employees share files and sensitive data constantly. Including customer lists, financial projections, and intellectual property. This means regulated and business critical data is constantly being exposed to third-party tools and individuals. .

As such, organizations often ban specific data from being used in these tools entirely based on its sensitivity – thus limiting productivity and results.

The "Never Decrypt" Advantage: With OmniIndex, your "Never Decrypt" workflow is seamlessly integrated into your existing cloud environment and tools. It ensures that:

- Data is Encrypted Before It's Shared: Files containing sensitive PII or keywords are automatically encrypted before they ever leave your control and enter the cloud.
- Collaboration Continues, Risk Doesn't: Colleagues can collaborate on documents as they normally would, but the sensitive data within remains encrypted and unreadable to unauthorized parties, including the cloud provider.
- You Keep Control: Files are stored in your own encrypted blockchain, not in the provider's own drive. This eliminates third-party access.

The Edge: While your competitors slow down productivity with restrictive controls, your teams can collaborate freely & fearlessly.





A Competitive Edge from Your Most Sensitive Data

The ability to analyze your most secure, high-value and regulated data offers a significant competitive advantage. It allows you to make more informed decisions using information that was previously siloed and kept away from your main workflow purely for protection.

With the OmniIndex "Never Decrypt" platform, you can perform analytics without ever exposing the underlying data. This moves your security posture from a purely defensive function where critical and valuable data is hidden, to one empowering strategic insight.

The intelligence to outmaneuver your competition is already there, sitting in your systems. It's time to unlock it. **Safely.**

never decrypt

OmniIndex

www.omniindex.io +1 (650) 297-4682

